

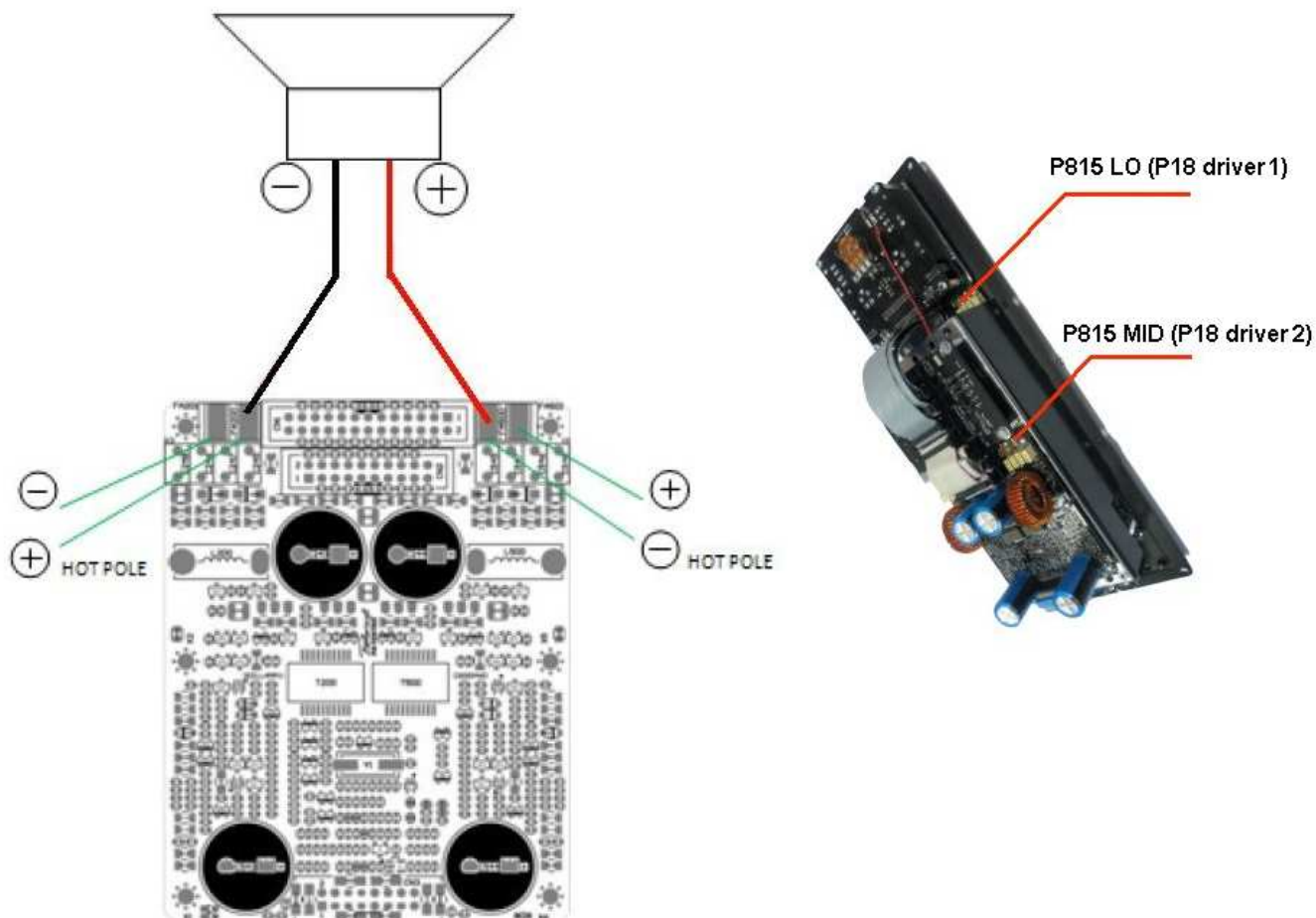
## P815 & P18 Replacement amplifier Installation Guide

### Package contents:

- Procella amplifier module
- 3mm Hex key
- This installation guide

**Please consider electrical safety and unplug the power cord when replacing the amplifier module !**

- Position the enclosure with the amplifier facing up.
- Unscrew the eight M4 mounting bolts with the attached hex-key. Store the bolts in a safe place.
- Use a screwdriver in the bolt holes to pry out the amplifier module. There is a tight fit.
- Unplug the fan cable and the loudspeaker cables carefully from the module. Mark the loudspeaker cable pairs with a piece of tape so that they can be re-connected in the same place.
- Re-connect all cables in the new module and make sure that all connectors are properly connected. Please note that there are 4 flat-tab connector on each module and that the loudspeaker cables should be connected to the inner pair.
- Replace the new module in the enclosure and insert the bolts. Tighten the bolts carefully in a cross pattern. DO NOT over tighten the bolts!



Please contact Procella Audio directly should you have any further questions.

Email: [sound@procella-audio.com](mailto:sound@procella-audio.com) Website: [www.procella-audio.com](http://www.procella-audio.com)