

P10 & P15

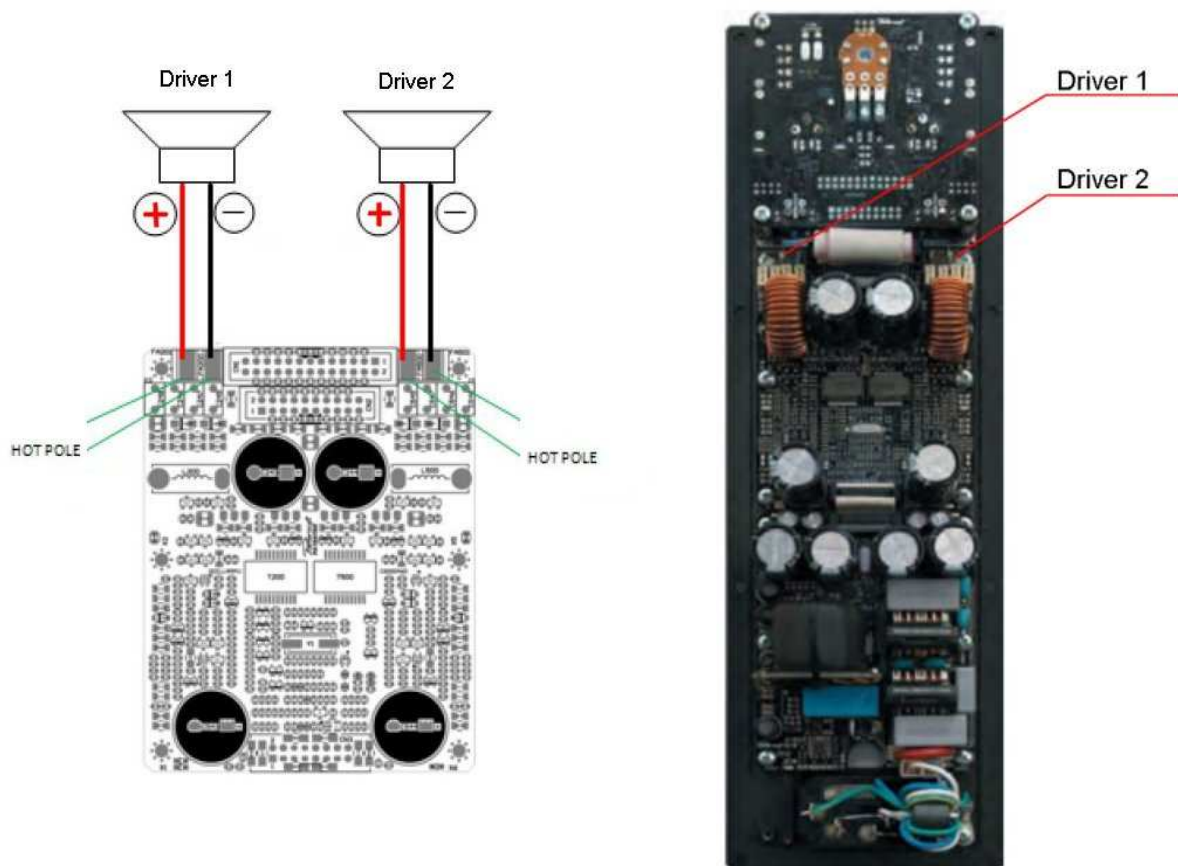
Replacement amplifier Installation Guide

Package contents:

- Procella amplifier module
- 3mm Hex key
- This installation guide

Please consider electrical safety and unplug the power cord when replacing the amplifier module !

- Position the enclosure with the amplifier facing up.
- Unscrew the eight M4 mounting bolts with a 3mm hex-key. Store the bolts in a safe place.
- Use a screwdriver in the bolt holes to pry out the amplifier module. There is a tight fit.
- Unplug the loudspeaker cables carefully from the module. Mark the loudspeaker cable pairs with a piece of tape so that they can be re-connected in the same place.
- Re-connect all cables in the new module and make sure that all connectors are properly connected. The flat-connectors are 4.8 x 0.8mm.
- Replace the new module in the enclosure and insert the bolts. Tighten the bolts carefully in a cross pattern. **DO NOT** over tighten the bolts!



Please contact Procella Audio directly should you have any further questions.

Email: sound@procella-audio.com Website: www.procella-audio.com