



# P6iW

## In-Wall L/C/R/Surround/Height Speaker Technical Information



- Identical performance and sound as Procella’s award-winning P6
- All MDF sealed-box design including integral back box
- Drivers and crossover mounted on removable front baffle
- Main speaker for mid-size rooms; surround or height channel for any size room

- 6.5” high-efficiency woofer driver
- 1” pro compression driver on 80° circular constant directivity waveguide
- Ideal for ceiling mounted Atmos and VOG 3D Audio height channels
- Elegant wing-shaped white grille with white fabric cover adds attractive and distinctive look to any environment; black grille optional

**Impedance** 8 Ohms nominal. Phase angles less than 30 degrees.

**Power handling**  
Continuous 100 Watt  
Peak 300 Watt

**Sensitivity**  
1m/1w 90dB

**Maximum SPL** 116dB continuous, 122dB peak

**Frequency response**  
-3dB points 70 Hz and 20 kHz

**Dispersion pattern**  
-6dB Constant directivity;  
80° circular from 2.0kHz

**Crossover** 4th Order Linkwitz-Reilly.  
1.9kHz, BSC

**Connectivity** Gold plated push terminals

**Components**  
*Midrange* 6.5” driver with 40mm voice coil in 9 litre sealed box

*High Frequency* 1” compression driver, circular constant directivity waveguide

**Construction** Solid MDF, sealed back box.

**Dimensions**  
*Speaker WxH* 12.875” x 18.5” / 328 x 470mm  
*Depth* 3.9”/ 98mm (fits in standard U.S. walls)  
*Wall cut-out* 11.5” x 17” / 292 x 432mm  
*Grille WxH* 15.75” x 19.7” / 400 x 500mm

**Shipping Carton**  
*HxWxD* 5.75” x 19.7” x 23.6”/ 265 x 500 x 600 mm

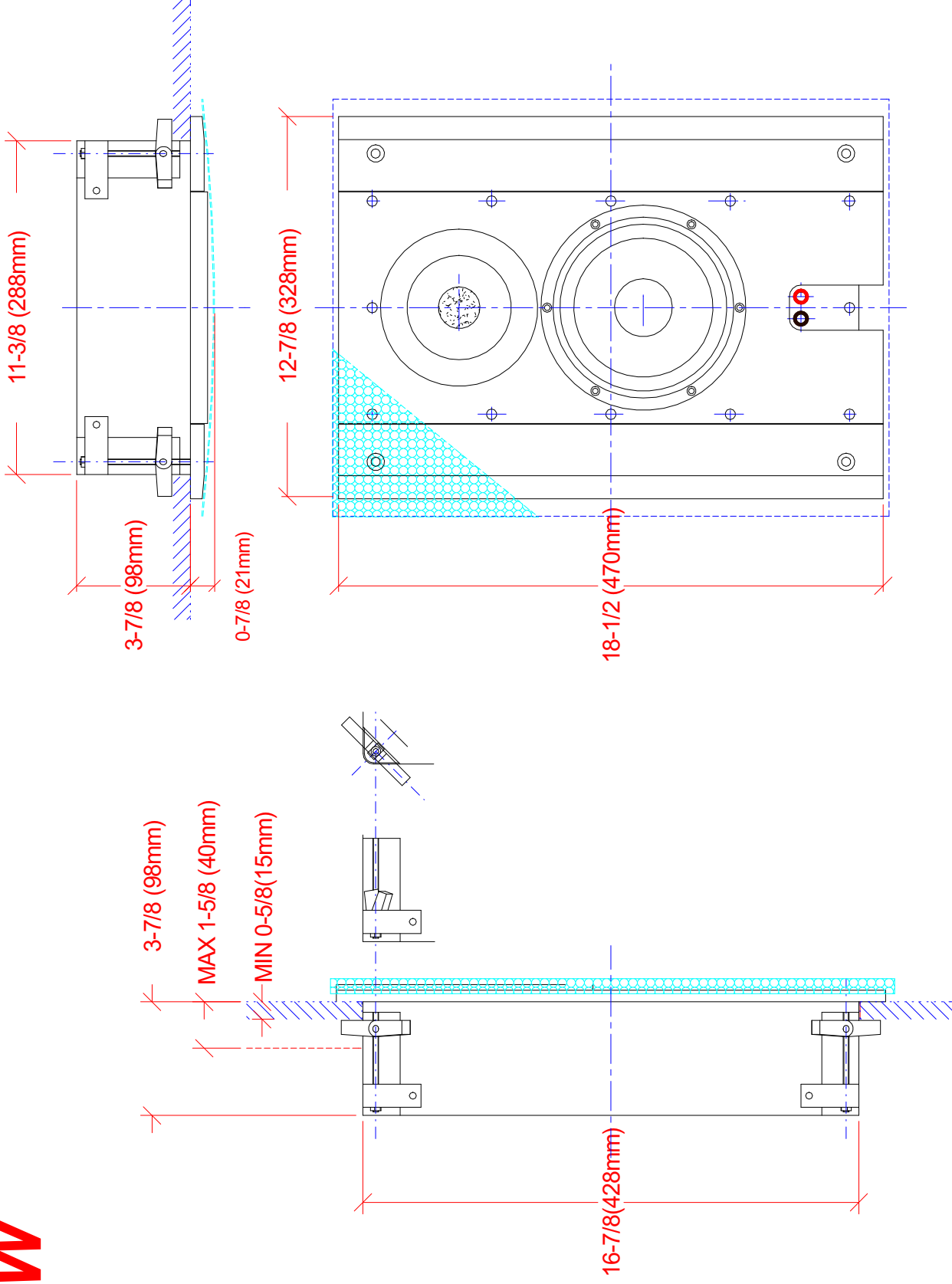
**Net weight** 22 Lbs. / 10 Kg

**Shipping weight** 26.5 Lbs. / 12 Kg

**Optional** Black steel grille, black fabric

**Assembly** Sweden; 100% QC testing

# P6iW



18, 15+12mm MDF  
Wall cut-out = 17"x11.5 (292x432mm)  
Weight =  
Box volume = 8.7L  
Package: 600x500x250mm



Procella P6 inWall  
Anders Uggelberg, 10feb-13  
UPD: 25/7, 1/10  
Scale 1:5 (PDF/JPG-file not to scale)  
P6iW.CAD