

The high life. Most of us aspire to it, but very few get the chance to live it. But if you're a resident of Ballymore Group's 50-storey Pan Peninsula high-rise in London's docklands, then you literally get to go up in the world. From its deluxe apartments, swanky restaurant, leisure centre and spa, no expense has been spared. No surprise, then, that the developers also decided to include a ground-floor theatre for residents to use.

Pro-installers Custom Sight & Sound were brought into to fit the system within the 'immovable' budget of £100,000. With an otherwise open brief, CSS began planning a 26-seat theatre designed to match the building's other facilities.

The team behind the build says the biggest immediate challenge was the space they had to work with – an unusual heart-shaped room with a semi-circular bar area.

Explains CSS managing director Ian Bolt: 'The geometry of cinema systems is critical, and you normally have some 90-degree angles to work from. With curved walls we had no such luxury.' To this end CSS designed a flat wall section at the head of the room, to which it fixed the mammoth 160in projector screen. The front stage of speakers were then placed on a support frame behind.

Considering the size of the venue and the AV quality desired, the install team opted to go with a Runco RS1100 Ultra projector to partner the a Screen Research acoustically transparent screen. AV sources >

Room essentials

A Big screen business

Cinematic thrills come from Runco's £15K RS1100 Ultra DLP projector. 'We have always supported this brand,' installers CSS told HCC. 'No-one produces a more cinematic projector.'

B Easy living

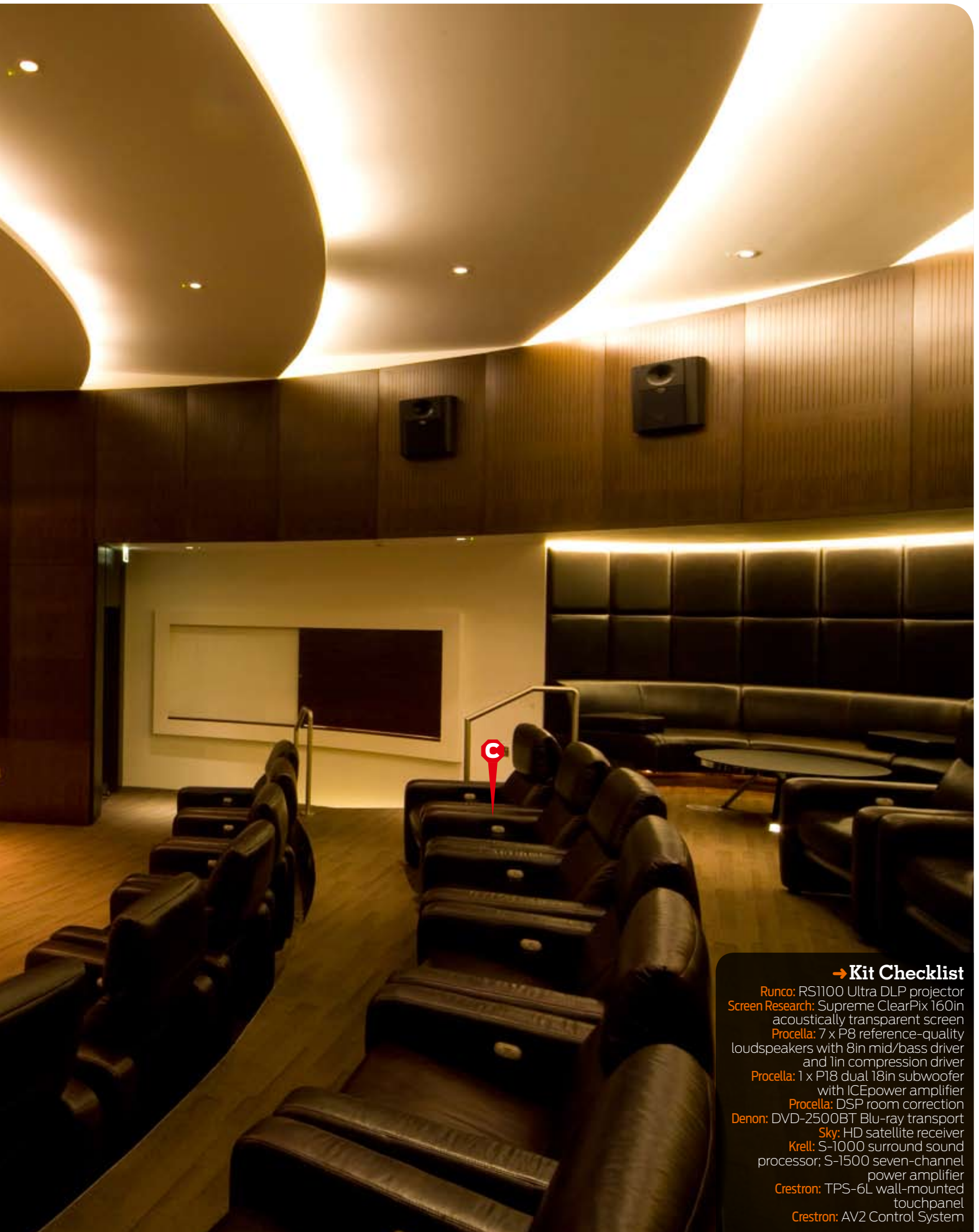
Denon's DVD-2500BT transport and the Crestron touchpanel are fitted in the wall, so residents can feed the cinema without having to access the boot-room control rack

C Sit back and relax

All 26 of the cinema seats are full-leather electrically-operated recliners. Pass the popcorn...

Hi-def for everybody!

Anton van Beek visits
a luxury basement cinema with
more than 26 owners



→ Kit Checklist

- Runco:** RS1100 Ultra DLP projector
- Screen Research:** Supreme ClearPix 160in acoustically transparent screen
- Procella:** 7 x P8 reference-quality loudspeakers with 8in mid/bass driver and 1in compression driver
- Procella:** 1 x P18 dual 18in subwoofer with ICEpower amplifier
- Procella:** DSP room correction
- Denon:** DVD-2500BT Blu-ray transport
- Sky:** HD satellite receiver
- Krell:** S-1000 surround sound processor; S-1500 seven-channel power amplifier
- Crestron:** TPS-6L wall-mounted touchpanel
- Crestron:** AV2 Control System

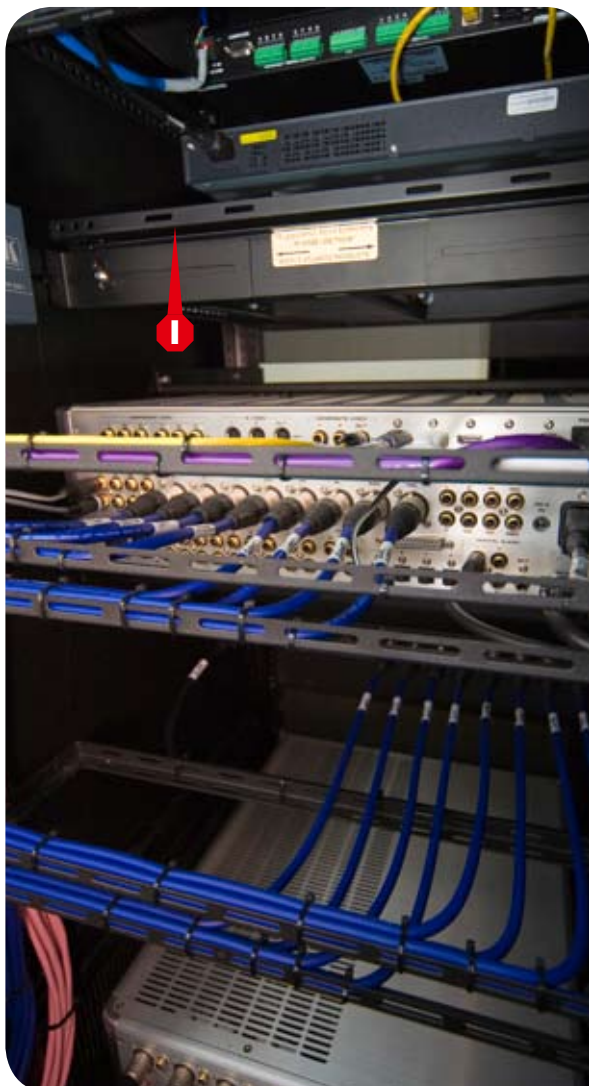
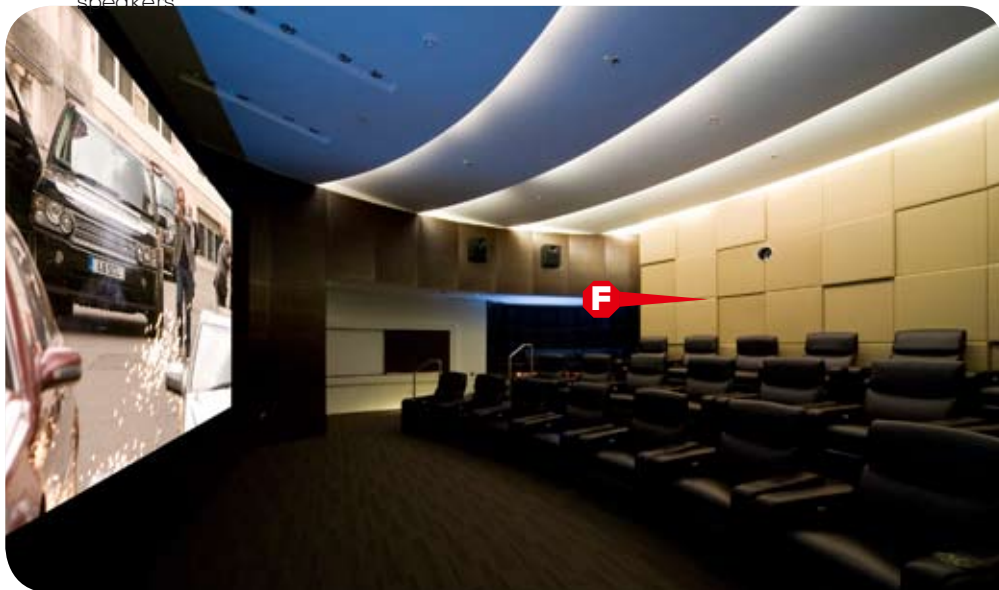
32 INSTALL

include Denon's highly rated DVD-2500BT Blu-ray transport ('the first to come along that we would be happy to have used in such an environment,' reveals Bolt) along with Sky+HD. The audio side of the system comprises amplification by Krell and Procella P series speakers in a 7.1 configuration.

All functions, including lighting, are controlled by a Crestron AV2. And, in order to make the facility as easy to use as possible for the residents, the Denon BD-spinner and Crestron TP-S6L touchpanel are both cut into the wall on the right-hand side of the room. This rather sensibly allows full control and disc-loading without having to access the throbbing rack of electronics that lurk in a service room behind the screen.

The finished cinema has unsurprisingly become a favourite facility with residents of the Pan Peninsula high-rise. Indeed, it's almost enough to get the HCC staff to pool their pennies and buy an apartment there, just so that we can use it whenever we want ●

Before: The 26 seats were placed on a three-tier stage. CSS used a dividing wall (right) to mount the projector screen and speakers



F Acoustically aware

Although the curved room shape didn't create any nasty reflections, the rear wall was still panelled with a light fabric, stretched over MDF board with a soft infill material, to reduce room reflections and therefore improve dialogue intelligibility. In your own viewing room, bookcases (with books staggered rather than flat) will do much the same job

G Pro level audio

The cinema features a 7.1 set of Procella's P Series speakers – including the P18 subwoofer, which boasts twin 18in drivers and a 1,100W ICE power amplifier. In almost all circumstances, two subs will work better than one if you want to pressure load your room

H Take a break

Pan Peninsula's cinema-going residents can conduct their post-movie arguments in the adjacent seating area. Very swish – note how the circular motif of the theatre is carried through

I Behind the scenes

To the rear of the projection screen is the cinema's control room, which houses Krell pre- and power amps, a Sky+ HD box and the Crestron A2 controller. Boot rooms are a great way to squirrel away kit – just make sure they're well ventilated

